

## YEAR END SHOW 2024

NOVEMBER 16 & 17  
Texas Rose Horse Park  
Tyler, TX

Thank you to our Gold Level Sponsors!



The Wiles  
Family



Double Oak Tack



Photos by Ingrid Fease Photography :: <https://ingrid-fease-photography.pixieset.com/>

# SHOW OFFICIALS

<b>JUDGES:</b>	Chris Nelson 'R'   Haley Schoolfield 'R' Cindy Stovall 'R'   Robyn Collins Sarahjoy Mount
<b>MANAGER:</b>	Becky Rainwater 214-250-1139
<b>COURSE DESIGNER:</b>	Becky Rainwater
<b>SHOW COMMITTEE:</b>	Angela Bollinger Jordan Mallard Lexie Boley
<b>PADDOCK MASTERS:</b>	Erika Matheney   Brittany Sayre Christina Copus   Christianna Nichols
<b>SHOW OFFICE:</b>	Amy Frenzel <a href="mailto:amy@equine-events.net">amy@equine-events.net</a>
<b>CONCESSIONS:</b>	La Escaramuza



## USHJA OUTREACH

We are excited to be able to continue to offer USHJA Outreach divisions in 2024.

USHJA Outreach offers national recognition at the local level and year end awards. Rider membership is free and can be completed on USHJA.org!



**USHJA Outreach Competitions provide the opportunity to earn national recognition in classes from walk/trot to 3'0" in Hunter and Equitation sections and .60m-1.20m in Jumper sections at rated and local shows.**

**Any rider may compete in Outreach Hunter, Jumper, and Equitation classes, but riders wishing to earn points and national recognition must be a USHJA free Outreach member or any other USHJA member category.**

# Show Rules & Information

**ENTRIES:** Please submit entries via <http://nthjc.horsespot.net> or via email at [amy@equine-events.net](mailto:amy@equine-events.net). Entries are due by November 8<sup>th</sup>. A \$25 late fee will be applied on entries received after Nov. 8<sup>th</sup>. **Please confirm your total stalls and shavings order via email to [amy@equine-events.net](mailto:amy@equine-events.net).** Stall locations will be awarded on a first-come, first-serve basis – we will do our best to meet everyone's requests!

**CLASS FEES:** \$25 per class. Classics: \$50 per class. Hunter Derby: \$100. Add-Backs \$35.

**STALL FEES:** \$125 each, from Friday-Sunday. Shavings: \$13/Bag (3 Minimum). Early Move-In or Late Move-Out available for \$40 per night, including tack stalls. Horse not renting a stall will be charged a grounds fee of \$45. Please request early move-in with the show secretary either via the online entry form with your entries, or via email to [amy@equine-events.net](mailto:amy@equine-events.net).

**SHOW FEES:** Each horse/rider combination will be charged an EMT fee of \$20. An EMT will be on grounds during posted schooling and show times. A \$15 office/\$10 NTHJC scholarship fee will be charged at \$25 per horse/rider combination. An open check fee of \$15 will be charged for all accounts not closed at the show. Non-members of NTHJC will be charged a \$30 fee.

**FORMS OF PAYMENT:** Payment for entries can be made via check, cash, or credit/debit card. A 3% convenience fee will apply to all credit card transactions.

**REFUNDS POLICY:** Cancellations made after November 13<sup>th</sup> will be responsible for \$25 Office Fee and a \$125 stall fee if a stall was reserved. All other fees are fully refundable.

**NON-SHOWING ENTRIES:** Non-showing entries will be charged a \$40 schooling fee, in addition to show and stall or grounds fees. Non-showing entries are required to pay Office/Scholarship Fee and EMT Fee. All horses on the grounds must be registered in the show office and receive a back number.

**USHJA OUTREACH PROGRAM:** The NTHJC Benefit Show will be recognized by USHJA Outreach and qualify for USHJA Outreach points for Zone 7. To read more about the USHJA Outreach program and get your free membership, visit their website at: <https://www.ushja.org/competition/outreach>

**NTHJC THOROUGHBRED HIGH POINT AWARDS:** Entry is free. TB registered name or tattoo # is required. Entry must be completed on <http://www.nthjc.com> prior to the completion of the show. Thank you to **Oak View Equestrian** for sponsoring our High Point TB Awards.

**COGGINS:** Proof of a negative Coggins (EIA) within one year is required by state law. No entry will be accepted without a Copy of the Original Coggins test which may be emailed to [amy@equine-events.net](mailto:amy@equine-events.net) with entries or presented to the show office upon arrival. Includes non-showing entries.

**ARENAS:** Olde Oaks Ring (Main Hunter) – 160' x 300' Premier Equestrian artificial mix footing. Parks Ring (Hunter 2) 160' x 280' and Fairfield Ring is 135' x 300', both with sand composite footing. RWB Ring (Jumper Ring): 180' x 300' Premier Equestrian artificial mix footing. Footing quality is a priority and rings may be closed during inclement weather or for maintenance at any time during the show.

**SCHOOLING:** There will be open schooling in all rings Friday from 12:00PM until 6:00PM. Schooling available prior to ring start according to posted times on the schedule. **No Jumper schooling on Saturday or Sunday.**

**LIMIT DIVISIONS:** Limit divisions are open to riders who begin the show season without having won 5 blue ribbons over fences. After winning five (5) blue ribbons over fences the rider may continue to compete in this Division for the remainder of the show season. Warm up or Add Back blue ribbons will not count in the allowed Limit Blue Ribbons. Limit Riders may NOT show in any classes over 2'0 at this show.

**CROSS ENTRIES:** A horse/rider combination may cross enter only into divisions with fence heights of a 6" difference. Walk Trot Poles may only cross enter in Walk Trot Crossrails. Walk Trot Crossrails may only cross enter into Limit Beginner 18". Riders in Short Stirrup 18" may only cross enter into Limit Beginner 18". Riders competing in 2' Open Hunter may not cross enter into 2' Jr/Am Hunter.

**MEDAL FINALS:** All riders accruing 15 points over the course of the season will be invited to enter the Medal Final for their respective division. Medal classes **will not** count towards Equitation Champion & Reserve at this show (however, champion and reserve will still be awarded for Equitation O/F and Equitation Flat).



# Show Rules & Information (cont.)

**AWARDS:** All classes receive a first place Prize and 6 ribbons unless otherwise noted. A Champion ribbon & prize and a Reserve Champion ribbon will be awarded for each division.

**ATTIRE:** Formal show attire is required in all classes. Jumper riders are permitted to wear polo shirts.

**HELMETS:** Properly fastened protective headgear must be worn at all times by all riders when mounted anywhere on show grounds. All headgear must meet or exceed ASTM standards, carry SEI tag and be properly fitted and secured by a harness.

**DOGS:** All dogs must be on a leash held in hand or confined.

**CONCESSIONS:** Concessions will be available during show hours.

**SPLIT CLASSES:** All classes, except warm-ups and specialty classes, with 20 or more entries will be split. Classes 18" and under will be split at 16 entries.

**COMBINING CLASSES:** Classes may be combined at the manager's discretion. Junior/Amateur classes will not be combined with classes open to professionals and cannot exceed a 6" height difference.

**WARNING:** Under Texas law (Chapter 87, Civil, Practice & Remedies Code), an equine professional is not liable for an injury to or the death of a participant in equine activities resulting from the inherent risks of equine activities.

**RESPONSIBILITY NOTICE:** Submission of entry to this show constitutes an agreement to the following: Exhibitor agrees to indemnify and hold harmless NTHJC and show officials and management against any claim, demands, costs and expenses, including reasonable attorney fees for the defense thereof, arising from the conduct or management of Exhibitor's business or its use of the premises or from any breach on the part of Exhibitors of any conditions of this Agreement, or contractors, agents, employees, guests, or invitees in or about the premises. In case of any action or proceeding brought against NTHJC and show management and officials by reason of any such claim. Exhibitor, upon notice, covenants to defend such action of proceeding by council acceptable to the owner. Exhibitor is responsible for his/her own property and NTHJC and Show management are not responsible for accidents, fire, or theft.

**GOLF CART & RV RENTALS:** To rent a golf cart or RV, please visit <https://texasrosehorsepark.com/exhibitors.html> for the appropriate forms. Forms should be mailed with payment prior to the show to secure your reservation. For more information, contact Texas Rose Horse Park at (903)-882-8696.

**PROGRESSIVE DINNER:** If you are interested in participating in our progressive dinner at the Rose Barn on Saturday night, please e-mail Katie Hodson at [khodsontosk@gmail.com](mailto:khodsontosk@gmail.com).



# Stirrup some fun at the NTHJC Year End Show

[NTHJC.HorseSpot.net](http://NTHJC.HorseSpot.net)



**Easy Entries, Schedules,  
Start Times, and Live Results**  
On Horse Spot—your horse show tech platform

**HORSE  
SPOT**





# Hunter Divisions

## Rusty Stirrup Hunter Division (USHJA Adult 18" Hunter)

*Sponsored by The Wiles Family*

Open to Amateur riders 18 years of age or older. Full course of 18" verticals. **Sponsored by the Wiles Family.**

10,11. Over Fences 12. Under Saddle

## Short Stirrup Hunter Division (USHJA Junior 18" Hunter)

*Sponsored by Southlake Equestrian*

Open to Junior riders under 18 years of age who have not won 5 blue ribbons over a figure eight course or placed in a class 2'3" or higher. Full course of 18" verticals. May only cross enter into Short Stirrup Equitation and Limit Beginner 18".

13,14. Over Fences 15. Under Saddle

## Open 2'0" Hunter Division (USHJA Open 2' Hunter)

Without Oxers. Open to all riders. Horse/Rider Combination may not cross enter into Jr/Am Hunter 2'0".

19. Over Fences 20. Over Fences 21. Under Saddle

## Junior/ Amateur 2'0" Hunter Division (USHJA Jr/Am 2' Hunter)

Without Oxers. Open to junior and amateur riders.

Horse/rider combination may not cross enter into 2'0 Open Hunter. **Sponsored by Kavallerie Farm.**

22. Over Fences 23. Over Fences 24. Under Saddle

## Junior 2'3" Hunter Division (USHJA Junior 2'3 Hunter)

*Sponsored by LJ Equestrian Center*

Open to junior riders. May be combined with Adult 2'3 if entries warrant.

28. Over Fences 29. Over Fences 30. Under Saddle

## Adult 2'3" Hunter Division (USHJA Amateur 2'3 Hunter)

Open to adult amateur riders. May be combined with Junior 2'3 if entries warrant.

31. Over Fences 32. Over Fences 33. Under Saddle

## Pony Hunter Division

*Sponsored by Kavallerie Farm*

Open to junior riders mounted on ponies. small 2'0, medium 2'3 & large 2'6.

37,38. Over Fences 39. Under Saddle 40. Pony Model

## Pre-Green 2'6" Hunter Division

Open to horses and ponies in their first or second year of showing in any competition over fences. Open to all riders.

44,45. Over Fences 46. Under Saddle

## Junior/ Amateur 2'6" Hunter Division (USHJA Jr/Ad 2'6 Hunter)

*Sponsored by MB Sport Horses*

Open to junior and amateur riders.

47,48. Over Fences 49. Under Saddle

## Low 2'9" Hunter Division (USHJA Open 2'9 Hunter)

Open to all riders.

53,54. Over Fences 55. Under Saddle

*Sponsored by The Rau Family*

## Children/Adult 2'9" Hunter Division (USHJA Jr/Am 2'9 Hunter)

Open to junior and adult amateur riders.

56,57. Over Fences 58. Under Saddle

## Working 3'0" Hunter Division (USHJA Open 3' Hunter)

Open to all riders. **Sponsored by Tin Top Farm.**

62,63. Over Fences 64. Under Saddle



# Equitation Divisions

## Limit Equitation Poles (USHJA Walk-Trot Eq.)

Walk trot over ground poles, once around. Open to riders who have not won 5 blue ribbons over poles.

- 1,2. Over Fences                      3. On the Flat

## Limit Equitation Crossrails (USHJA Walk-Trot Eq.)

Walk trot over crossrails, once around. Open to riders who have not won 5 blue ribbons over crossrails or poles.

- 4,5. Over Fences                      6. On the Flat

## Limit Beginner 18" (USHJA 18" Crossrails Eq.)

Walk trot canter over crossrails, twice around. Open to riders who have not won 5 blue ribbons at heights of 18" or higher.

- 7,8. Over Fences                      9. On the Flat

## Rusty/Short Stirrup Equitation 18" (USHJA Jr/Am 18" Eq.)

Open to Junior and Amateur riders. Full course of 18" vertical

16. Over Fences                      18. On the Flat

## Junior/Amateur 2'0 Equitation (USHJA Jr/Am 2' Eq.)

Without Oxers. Open to junior and amateur riders. Horse/rider combination may enter into 2'0 Open Hunter or 2'0 Jr/Am Hunter, but not both.

25. Over Fences    27. On the Flat

## Junior/ Amateur 2'3 Equitation (USHJA Jr/Am 2'3 Eq.)

Open to junior and amateur riders.

34. Over Fences    36. On the Flat

## Pony Equitation 2'0, 2'3, 2'6

Open to junior riders mounted on ponies. small 2'0, medium 2' & large 2'6.

41. Over Fences    43. On the Flat

## Junior/ Amateur 2'6 Equitation (USHJA Jr/Am 2'6 Eq.)

Open to junior and amateur riders.

50. Over Fences    52. On the Flat

## Children/ Adult 2'9 Equitation (USHJA Jr/Am 2'9 Eq.)

Open to junior and adult amateur riders.

59. Over Fences    61. On the Flat

## Junior/ Amateur 3'0 Equitation (USHJA Jr/Am 3' Eq.)

Open to junior and adult amateur riders.

65. Over Fences    67. On the Flat

## Medal Finals *Sponsored by Frenzel CPA PLLC*

26. Jr/Am 2'0 Medal Final  
35. Jr/Am 2'3 Medal Final  
42. Pony Medal Final  
51. Jr/Am 2'6 Medal Final  
60. Ch/Ad 2'9 Medal Final  
66. Jr/Am 3'0 Medal Final

# Jumper Divisions

## Future Jumpers 2'3" (USHJA .70m Jumper)

Open to all riders. **Will not contain oxers.**

68. TableII Sec.2b (Timed Jump-Off)

69. TableII Sec.1 (Timed 1<sup>st</sup> Round)

70. TableII Sec.2c (Power & Speed)

## Puddle Jumpers 2'6"-2'9" (USHJA .75-.80m Jumper)

Open to all riders.

71. TableII Sec.2b (Timed Jump-Off)

72. TableII Sec.1 (Timed 1<sup>st</sup> Round)

73. TableII Sec.2c (Power & Speed)

## Schooling Jumpers 3'0"-3'3" Division (USHJA .90-.95m Jumper)

Open to all riders.

74. TableII Sec.2b (Timed Jump-Off)

75. TableII Sec.1 (Timed 1<sup>st</sup> Round)

76. TableII Sec.2c (Power & Speed)





# Add-Backs & Warm-Ups

## Saturday Add-Backs: (\$35)

*\$10 of entry fee will be contributed to a prize pool split at the following percentages:*

*1<sup>st</sup> – 30%, 2<sup>nd</sup> – 20%, 3<sup>rd</sup> – 16%, 4<sup>th</sup> – 13%, 5<sup>th</sup> – 11%, 6<sup>th</sup> – 10%*

- 101. WT Poles Add-Back
- 103. WT Crossrails Add-Back
- 105. WTC Crossrails Add-Back
- 107. Short/Rusty Stirrup Add-Back
- 109. 2' Add-Back
- 111. 2'3 & Pony Add-Back
- 115. 2'6 Add-Back
- 117. 2'9 Add-Back
- 119. 3' Add-Back
- 121. Future Jumper (TableII.Sec1) Add-Back
- 123. Puddle Jumper (TableII.Sec1) Add-Back
- 125. Schooling Jumper (TableII.Sec1) Add-Back

## Sunday Warm-Ups: (\$25)

- 102. WT Poles Warm-Up
- 104. WT Crossrails Warm-Up
- 106. WTC Crossrails Warm-Up
- 108. Short/Rusty Stirrup Warm-Up
- 110. 2' Warm-Up
- 112. 2'3 & Pony Warm-Up
- 116. 2'6 Warm-Up
- 118. 2'9 Warm-Up
- 120. 3' Warm-Up
- 122. Future Jumper (TableII.Sec1) Warm-Up
- 124. Puddle Jumper (TableII.Sec1) Warm-Up
- 126. Schooling Jumper (TableII.Sec1) Warm-Up

## Non-Recognized Classes

- 301. Leadline (Free Entry)

**Congratulations to Steps with Horses, recipient of our 2023 Benefit Award!**



**Make sure to check them out at:**

<https://www.stepswithhorses.org/>



Riding lessons (English & Western)

Summer camps

Horsemanship seminars and riding clinics

Playdays, other activities like fishing, dirt bike riding and mountain biking

Check out our fully furnished vacation rental!



<http://freedomacrestexas.com>

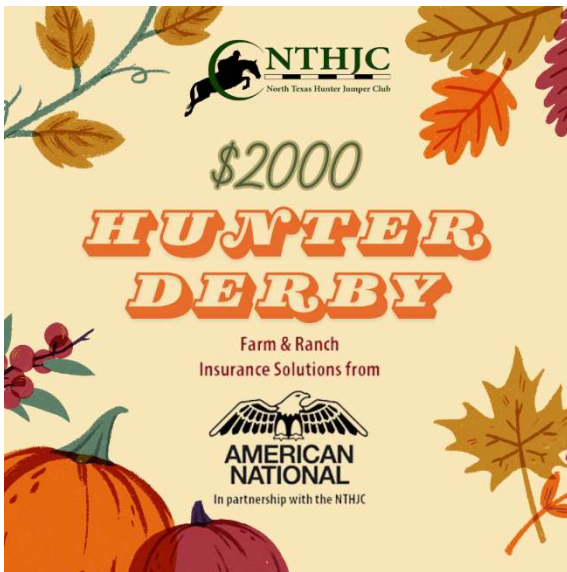
940-246-2040



@freedomacresranchtexas



# Classics & Derbies



## **\$2,000 NTHJC Hunter Derby sponsored by American National**

*Top Non-Pro Rider and Best Turned-Out Horse Award sponsored by Raintree Farm*  
Class 80, Entry fee \$100. Fence height 2'6" – 2'9" with 3'0" options. Open to all horses paying to compete in a full division at the show. 1<sup>st</sup> round: classic hunter course of at least 10 jumps including an in and out and minimum of 3 option fences. 2<sup>nd</sup> round: Handy hunter course of the top 12 horses if available. 1 bonus point will be awarded for each option jump completed and, in the 2<sup>nd</sup> round, up to 10 points may be awarded for handiness. No schooling of the course is allowed. Late entries will ride at the top of the order. 30 minutes prior to the class entries may walk the course with horses in hand only. 3 sets of ribbons 1st – 12th will be awarded.

*1st - \$600, 2nd - \$400, 3rd - \$340, 4th - \$240, 5th - \$220, 6th - \$200*

## **\$500 2'0 Hunter Mini-Derby sponsored by Double Oak Tack**

Class 81, entry fee \$50. Fences 2'0. Open to junior or amateur riders horses competing in the Open or Jr/Am 2' Division. First Hunter O/F round on Sunday will count as the first round. Handy Round on Sunday will be the second round. Class may not be added at the gate, only in the office. Ribbons awarded 1st-8th place. Minimum 8 entries for prize money to be awarded.

*1st - \$140, 2nd - \$100, 3rd - \$80, 4th - \$70, 5th - \$60, 6th - \$50*

## **\$500 2'3 & Pony Hunter Mini-Derby sponsored by Noma Show Stables**

Class 82, entry fee \$50. Fences 2'3. Open to junior or amateur riders horses competing in the Junior or Adult 2'3 Division or Pony Hunter Division. First Hunter O/F round on Sunday will count as the first round. Handy Round on Sunday will be the second round. Class may not be added at the gate, only in the office. Ribbons awarded 1st-8th place. Minimum 8 entries for prize money to be awarded.

*1st - \$140, 2nd - \$100, 3rd - \$80, 4th - \$70, 5th - \$60, 6th - \$50*

## **\$500 Future Jumper Classic sponsored by Logan Equestrian**

Class 83, entry fee \$50. Fences 2'6-2'9. **Table II, Sec 2b.** Open to horses competing in the Future Jumper Division. Ribbons awarded 1st-8th place. Minimum 8 entries for prize money to be awarded.

*1st - \$140, 2nd - \$100, 3rd - \$80, 4th - \$70, 5th - \$60, 6th - \$50*

## **\$500 Puddle Jumper Classic sponsored by Greetings from the Farm**

Class 84, entry fee \$50. Fences 2'6-2'9. **Table II, Sec 2b.** Open to horses competing in the Puddle Jumper Division. Ribbons awarded 1st-8th place. Minimum 8 entries for prize money to be awarded.

*1st - \$140, 2nd - \$100, 3rd - \$80, 4th - \$70, 5th - \$60, 6th - \$50*

## **\$500 Schooling Jumper Classic Sponsored by ESMS**

Class 85, entry fee \$50. Fences 3'0-3'3 or 3'3-3'6. **Table II, Sec 2b.** Open to horses competing in the Schooling Jumper Division. Class must be ridden at the highest height shown. Ribbons awarded 1st-8th place. Minimum 8 entries for prize money to be awarded.

*1st - \$140, 2nd - \$100, 3rd - \$80, 4th - \$70, 5th - \$60, 6th - \$50*



# Tentative Show Schedule

## Olde Oaks Farm Ring (1<sup>st</sup> Hunter)

*Formerly Texas Ring*

### Saturday

**7:00-7:45**

8:00 AM Start

- 46. Pre-Green Hunter U/S
- 115. 2'6 Add-Back**
- 44. Pre-Green Hunter O/F
- 47. Jr/Am 2'6 Hunter O/F
- 50. Jr/Am 2'6 Equitation O/F
- 49. Jr/Am 2'6 Hunter U/S
- 52. Jr/Am 2'6 Equitation Flat
- 117. 2'9-3'0 Add-Back**
- 53. Low Hunter O/F
- 55. Low Hunter U/S
- 56. Ch/Ad 2'9 Hunter O/F
- 59. Ch/Ad 2'9 Equitation O/F
- 58. Ch/Ad 2'9 Hunter U/S
- 61. Ch/Ad 2'9 Equitation Flat
- 62. Working Hunter 3'0 O/F
- 65. Jr/Am 3'0 Equitation O/F
- 64. Working Hunter 3'0 U/S
- 67. Jr/Am 3'0 Equitation Flat

## Parks Ring (2nd Hunter)

*Formerly Rose Ring*

### Saturday

*Schooling 7:00-7:30AM*

8:00 AM Start

#### **109. 2'0 Add-Back**

- 19. Open Hunter 2'0 O/F
- 21. Open Hunter 2'0 U/S
- 22. Jr/Am 2'0 Hunter O/F
- 25. Jr/Am 2'0 Equitation O/F
- 24. Jr/Am 2'0 Hunter U/S
- 27. Jr/Am 2'0 Equitation Flat

#### **111. 2'3 & Pony Add-Back**

- 31. Adult 2'3 Hunter O/F
- 28. Junior 2'3 Hunter O/F
- 34. Jr/Am 2'3 Equitation O/F
- 33. Adult 2'3 U/S
- 30. Jr/Am 2'3 Hunter U/S
- 36. Jr/Am 2'3 Equitation Flat
- 37. Pony Hunter O/F
- 41. Pony Equitation O/F
- 39. Pony Hunter U/S
- 43. Pony Equitation Flat
- 40. Pony Hunter Model

### Sunday

*No Schooling*

7:30 AM Start

- 80. **\$2,000 NTHJC Hunter Derby**
- 301. Leadline

#### **116. Warm Up 2'6 Sun**

- 47. Pre-Green Hunter O/F
- 48. Jr/Am 2'6 Hunter O/F
- 52. Jr/Am 2'6 Medal Final

#### **118. Warm Up 2'9 Sun**

- 54. Low Hunter O/F
- 57. Ch/Ad 2'9 Hunter O/F
- 60. Ch/Ad 2'9 Medal Final

#### **120. Warm Up 3' Sun**

- 63. Working Hunter 3'0 O/F
- 66. Jr/Am 3'0 Medal Final

### Sunday

*Schooling 7:00-7:45*

8:00 AM Start

#### **109. 2'0 Warm Up**

- 20. Open Hunter 2'0 O/F – Mini-Derby Round I
- 23. Jr/Am 2'0 Hunter O/F – Mini-Derby Round I
- 81. \$500 2'0 Hunter Mini-Derby – Hnady Round
- 26. Jr/Am 2'0 Medal Final

#### **112. 2'3 & Pony Warm Up**

- 38. Pony Hunter O/F – Min-Derby Round I
- 42. Pony Medal Final
- 32. Adult 2'3 Hunter O/F – Mini-Derby Round I
- 29. Junior 2'3 Hunter O/F – Mini-Derby Round I
- 82. \$500 2'3 & Pony Hunter Mini-Derby – Handy Round
- 35. Jr/Am 2'3 Medal Final





# Tentative Show Schedule (cont.)

## Fairfield Ring (Limit/18" Ring)

### Saturday

*Schooling 7:00-7:30 AM*

*Poles Schooling 7:30-7:45 AM*

8:00AM Start

#### 101. WT Poles Add-Back

1. Limit Equitation Poles O/F

3. Limit Equitation Poles Flat

#### 103. WT Crossrails Add-Back

4. Limit Equitation Crossrails O/F

6. Limit Equitation Crossrails Flat

#### 105 WTC Crossrails Add-Back

7. Limit Beginner 18" O/F

9. Limit Beginner 18" Flat

*-15 Min Schooling-*

#### 107. Short/Rusty Stirrup Add-Back

10. Rusty Stirrup Hunter O/F

13. Short Stirrup Hunter O/F

12. Rusty Stirrup Hunter U/S

15. Short Stirrup Hunter U/S

18. Rusty/Short Stirrup Equitation Flat

### Sunday

*Schooling 7:00-7:30 AM*

*Poles Schooling 7:30-7:45 AM*

8:00AM Start

#### 102. WT Poles Warm-Up

2. Limit Equitation Poles O/F

#### 104. WT Crossrails Warm-Up

5. Limit Equitation Crossrails O/F

#### 106. WTC Crossrails Warm-Up

8. Limit Beginner 18" O/F

*-15 Min Schooling-*

#### 107. Short/Rusty Stirrup Warm Up

14. Short Stirrup Hunter O/F

11. Rusty Stirrup Hunter O/F

16. Rusty/Short Stirrup Equitation O/F

## RWB Ring (Jumper Ring)

### Saturday

*No Schooling*

7:30AM Start

#### 121. Future Jumper Add-Back TableII Sec.1

68. Future Jumpers 2'3 TableII Sec.2b

69. Future Jumpers 2'3 TableII Sec.1

#### 122. Puddle Jumper Add-Back TableII Sec.1

71. Puddle Jumpers 2'6-2'9 TableII Sec.2b

72. Puddle Jumpers 2'6-2'9 TableII Sec.1

#### 123. Schooling Jumper Add-Back TableII Sec.1

74. Schooling Jumpers 3'0-3'3 TableII Sec.2b

75. Schooling Jumpers 3'0-3'3 TableII Sec.1

### Sunday

*No Schooling*

7:30 AM Start

#### 122. Future Jumpers Warm-Up TableII Sec.1

70. Future Jumpers 2'3 TableII Sec.2c

83. \$500 Future Jumper Classic 2'3 TableII Sec.2b

#### 124. Puddle Jumpers Warm-Up TableII Sec.1

73. Puddle Jumpers 2'6-2'9 TableII Sec.2c

84. \$500 Puddle Jumper Classic 2'6-2'9 TableII Sec.2b

#### 126. Schooling Jumpers Warm-Up TableII Sec.1

76. Schooling Jumpers 3'0-3'3 TableII Sec.2c

85. \$500 Schooling Jumper Classic TableII Sec.2b

**Lights  
CAMERA  
ACTION!**

On the  
**NTHJC**  
North Texas Hunter Jumper Club  
Membership  
Incentive Program

**Discounts on  
services, products,  
and more!**

**Make sure to renew your membership Dec. 1!**

NTHJC WOULD LIKE TO EXTEND A HUGE THANK YOU TO OUR WONDERFUL SPONSORS ! THANK YOU FOR YOUR CONTRIBUTIONS TO OUR CLUB. THE CLUB SHOWS WOULD NOT BE POSSIBLE WITHOUT YOUR HELP!

**Farm & Ranch  
Insurance Solutions from**



**Double Oak Tack**



**AMERICAN  
NATIONAL**

In partnership with the NTHJC



**FREEDOM  
ACRES RANCH**

★ EST 2022 ★



**Farm and Home**

*Kavallerie Farm*



*Tin Top Farms*



*Noelle Schilling*

Team Manager & Realtor





SOUTHLAKE EQUESTRIAN



LITTLE FEATHER  
EQUESTRIAN CENTER



FRENZEL  
CPA

The Rau  
Family



The Wiles  
Family